

President: Paul Jenner
Email: michaelpauljenner@gmail.com.

Secretary: Richard Ryan
Email: rich.ryan4475@gmail.com

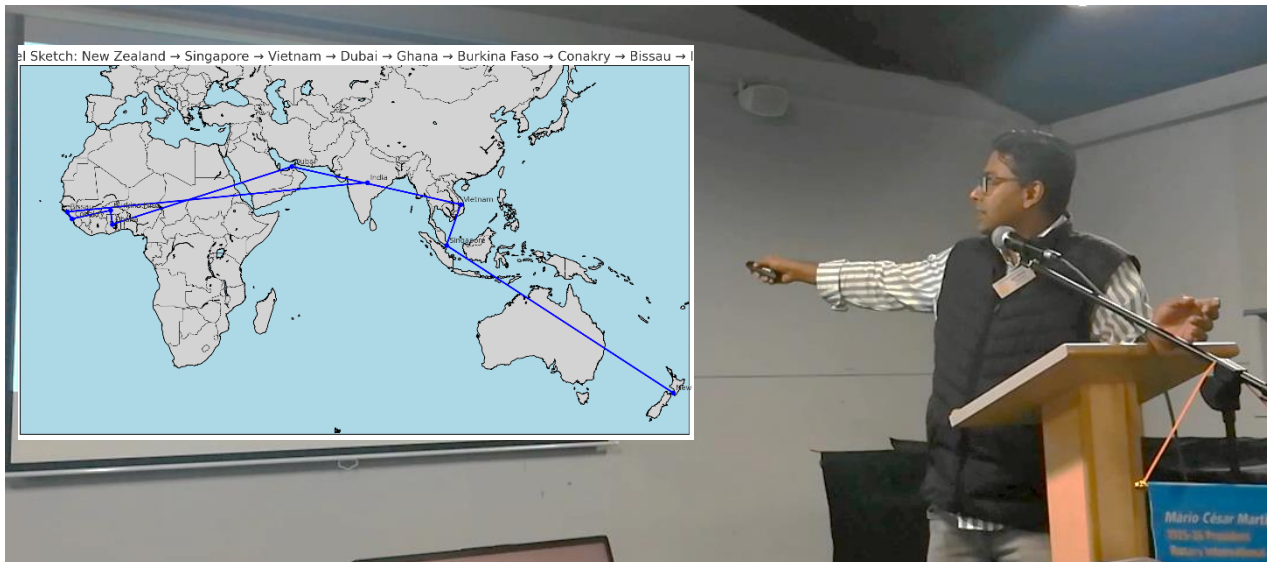
Apologies: Sharmeen Hyatt, Rod Kestle(LOA), Tony Rayner, Craig Jones, Brian Williams, Gary Hays, Mavis Moodie, Derek Neutze.
Visitors: Myra Watt

President Paul welcomed everyone to the meeting.

Sergeant Noel : Noel made a further call for RYLA nominees for RYLA June 2026.

Guest Speaker:

Guest Speaker 15th Sept.: Georg Varghese: Talking about, "***What I Do***", his travels and activities around the world.



Countries I operate in.

Purchase

Burkina Faso – French
Ivory Coast – French
Guine Conkary – French
Senegal – French
Guine Bissau – Portuguese
Ghana – English

Sales

- Vietnam
- India
- Turkey

HQ **Dubai**



Cashew



Aggregation
Quality assurance
Shipment

Sesame



George's presentation primarily focused on the intricacies of agricultural commodity trading, specifically highlighting the cultivation and market dynamics of cashew nuts and sesame seeds. George and family operate a trading business based in Dubai, and elaborated on the differences between these two crops, emphasizing their unique growth cycles, yield patterns, and price volatility. While cashew is characterized as a cash crop with a longer gestation period leading to stable pricing, sesame is a short-term crop that experiences significant market fluctuations due to rapid increases in production when prices are favourable. This foundational understanding of the commodities is crucial for navigating the agricultural market landscape.

In detailing the agricultural practices, George described the cultivation processes for both cashews and sesame seeds. Cashew trees, planted three meters apart, take three to four years to yield, producing for up to 25 years, while sesame plants require only four months to mature. The harvesting and processing methods are also distinct; cashews must be sun-dried to maintain quality during shipping, whereas sesame seeds are extracted through beating the dry plants and require cleaning to remove impurities before reaching the market. George underscored the importance of quality control in agricultural trading, illustrating how these practices impact the final product's marketability.



The implications of these agricultural dynamics extend beyond mere trading practices. George noted how market fluctuations in sesame can lead to overproduction, causing prices to plummet, while stable prices for cash crops like cashew can foster a more predictable trading environment.

However, recent challenges such as disease outbreaks in cocoa plantations have disrupted typical price stability, demonstrating the fragility of agricultural markets. Additionally, George contextualized their operations within the geopolitical landscape of West Africa, identifying key trading countries like Ghana and Ivory Coast, and discussed the logistical aspects of sourcing and distribution from these regions.



Moreover, the presentation delved into the Georges broader business activities in Dubai, including a significant real estate investment project. This venture reflects a diversification strategy beyond agricultural trading, capitalizing on the booming real estate market in a rapidly developing region.

George highlighted the advantages of operating in Dubai, such as the stability of the UAE Dirham and the ease of capital movement, which collectively create a favourable business environment. This context enriches the understanding of Georges multifaceted approach to

entrepreneurship, integrating agricultural trading with real estate development.

In conclusion, the presentation offered a comprehensive view of the complexities involved in agricultural commodity trading, particularly focusing on the distinct characteristics of cashew and sesame crops. The insights provided to not only illuminate the operational challenges and strategies in this field but also underscore the interconnectedness of agricultural practices and broader economic activities in a globalized market. By navigating the intricacies of supply and demand, quality control, and regional market dynamics, George illustrated the vital role of informed trading practices in ensuring sustainable business growth in the commodity sector.

George was thanked by Noel Carey for his excellent and informative presentation as well as his sharing of "What I Do".

Thought for the Week. Rett Stephens:

"Whether you think you can or you think you can't, you're right".

Attributed to Henry Ford

Duties 22nd of September

President Paul
Scribe Bill A
Attendance Bruce
Hospitality Derek
Meals - Brian -George
Thought For the Week - Jeanette
No guest speaker so no host or thanks required.

Apologies to Noel before 5.00pm Friday.

Club notices:

Remember 'The Joy of Walking' project is live, online, this week Friday the 19th of Sept.

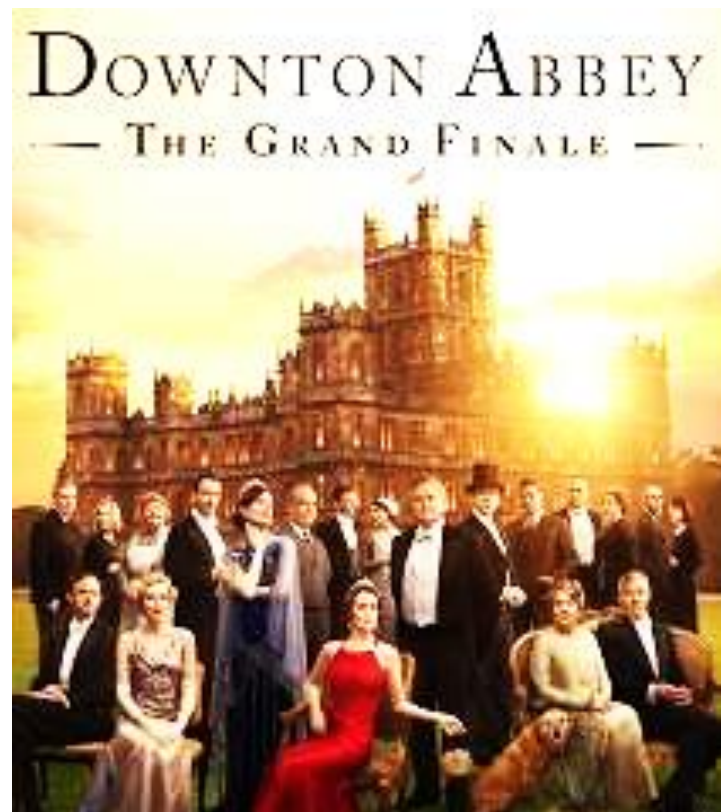
District are looking for expressions of interest in sending candidates to RYLA , (Rotary Youth Leadership Awards.) to be held in June 2026, at MERC Long Bay. Applications are required this year, 2025, to confirm numbers for planning. If anyone knows of suitable candidates, from your social group or family connections. Please advise Noel Carey.

Movie Night.

Monday the **13th of October** will be a Movie Night at the Lido Epsom.

The film is **Downton Abbey: The Grand Finale.**

Replaces our usual meeting that week. Please notify of your intention to attend, as soon as possible, to Gary Hays to facilitate the theatre booking.



For November 2025 Rotary Club of Maungakiekie Bookfair dates are:

Pamphlet dates:

- Monday 13th October- Printed stock delivered for splitting into delivery zones with maps.
- Monday 20th October- Pamphlet zone stock ready for Club Members pickup this night.
- Tuesday 21st October- Pamphlet delivery begins, and all delivered by Sunday 9th November.

Sorting dates:

- Begin sorting.
- Monday 10th- open Room 7-Sorting. Arrange banana boxes. Receive 2 x 3cum bins outside the deck, and setup using OC House tables.
- Tuesday 18th- open Room 4-Fiction and begin setup with extra tables.
- Wednesday 19th- open Room 6- Music, CDs, and NZ
- Thursday 20th- 9am- Take over whole House and setup Rooms 5-History, Sport, Art. Room 8- Children's books, toys, and puzzles.

Book fair times:

- **Friday 21st- Open at 7am-9am** for Early Birds/dealers with \$30 entry fee and EFTPOS. Close 5pm
- **Saturday 22nd- 9am to 5pm**
- **Sunday 23rd- 9am to 12pm.** Last gasp sale to close at **2pm.** (Marbecks etc.) Loadout residue to OJI fibre. Loadout tables and clean up.
- **Monday 24th-9am Final checks** and hand back to Tony and Miguel at OCH.

Happy
Days!
Bill
Grayson



Smile: It makes people wonder what you have been up to

Get your relatives speaking to one another again by sending a heartfelt Christmas card with a picture of your family with an extra child nobody knows.



Do you know the capacity of the brain ? It is estimated at 2.5 Petabytes . Now 1 Petabyte is 1,000 Terrabytes . 1 Terrabyte equals 1000 GB . If you were to put all the brain's capacity on a 16 GB pen drives , it would take 156,000 pen drives . The brain has 10 billion neurons .

Such a powerful system is usually hacked by a wife in 30 seconds or less .

That is all I wanted you to know 😊



Rotary Maungakiekie Bulletin Editor: Bill Appleton

bill.appleton.ri@gmail.com

End note. *Ex nihilo nihi.*